



Carolina Bird Club  
www.carolinabirdclub.org

# CBC Newsletter

ISSN No. 0162:7120

For members of the Carolina Bird Club, Inc.,  
Ornithological Society of the Carolinas

Volume 63

August 2017

Number 4

## Friday, Sept 29 & Saturday, Sept 30, 2017 Field Trip Itinerary

All meeting places for field Trips are in the parking lot of Litchfield Beach and Golf Resort unless otherwise noted. Please be at the meeting place ten minutes early. Times are departure times, and late arrivals will be left. Carpooling is a necessity for all Trips and please remember to reimburse drivers for their gasoline expenses.

**Please Note: Trips may change based on leader availability, location alterations and birds etc.**

### **Friday, Sept. 29, 2017—All Day**

- Trip 1:** 6:45am, Bull Island, depart from McClellanville at 8 am
- Trip 2:** 7:15am, Huntington Beach State Park
- Trip 3:** 6:45am, Santee Coastal Extended
- Trip 4:** 6:30am, Santee Coastal and Santee Delta
- Trip 5:** 8:00am, Tom Yawkey Center
- Trip 6:** 6:30am, Waties Island

### **Friday, Sept. 29, 2017—Half:Day Morning**

- Trip 7:** 7:00am, Lake Busbee & Conway Water Treatment Plant
- Trip 8:** 7:15am, Samworth WMA/ Dirleton Plantation
- Trip 9:** 7:45am, New Birders Workshop Huntington Beach SP
- Trip 10:** 7:00am, South Tibwin Plantation
- Trip 11:** 7:15am, Myrtle Beach State Park

### **Friday, Sept. 29, 2017— Half:Day Afternoon**

- Trip 12:** 1:30pm, Shorebird workshop
- Trip 13:** 1:10pm, Huntington Beach SP Jetty
- Trip 14:** 1:20pm, Huntington Beach SP trails
- Trip 15:** 1:25pm, New Birder workshop
- Trip 16:** 1:00pm, South Tibwin Plantation

### **Saturday, Sept. 30, 2017—All Day**

- Trip 17:** 6:45am, Bull Island, depart McClellanville 8am
- Trip 18:** 7:15am, Huntington Beach State Park
- Trip 19:** 6:45am, Santee Coastal Extended
- Trip 20:** 6:30am, Santee Coastal and Santee Delta
- Trip 21:** 8:00am, Tom Yawkey Center

### **Saturday, Sept. 30, 2017—Half:Day Morning**

- Trip 22:** 7:15am, Lake Busbee, & Conway Water Treatment Plant
- Trip 23:** 8:00am, Young Birders:Huntington Beach SP
- Trip 24:** 7:00am, South Tibwin Plantation
- Trip 25:** 7:30am, Myrtle Beach State Park
- Trip 26:** 7:45am, Sandy Island Kayak Trip

### **Saturday, Sept 30, 2017 : Half:Day Afternoon**

- Trip 27:** 1:30pm, Pawleys Island South End
- Trip 28:** 1:15pm, Huntington Beach SP Jetty
- Trip 29:** 1:00pm, South Litchfield Beach
- Trip 30:** 1:15pm, Huntington Beach SP trails

### **The CBC 2017 Bonus Trip to Costa Rica Led by Sherry Lane P. 7**

*CBC Newsletter* (USPS 023:534), August 2017, Volume 63, Number 4. Published bimonthly by the Carolina Bird Club, Inc., 9 Quincy Place, Pinehurst, NC 28374. **POSTMASTER:** Send address changes to *CBC Newsletter*, Carolina Bird Club, Inc., 9 Quincy Place, Pinehurst, NC 28374.

# Litchfield Beach Meeting Field Trip Descriptions

## All Day—Friday & Saturday, Sept. 29 & 30, 2017

### Trips 1 (Fri 6:45am) & 17 (Sat 6:45am): Bulls Island.

**Bulls Island is a full day boat Trip for \$45 per person.** The fee will be collected on board the ferry. They will take cash, check, or credit card. **(Bring lunch and water). We'll be walking on the island all day.** The pearl of Cape Romain National Wildlife Refuge, Bulls Island offers mud banks, saltwater marshes, beaches, freshwater impoundments, ponds, and upland habitats. This place is on anybody's list of the top five birding spots in South Carolina. We have arranged for the ferry to land at the island's north end to reduce the long walk from the regular landing. Here we will look at the massive shorebird roost at high tide, scope the ocean for interesting birds and then check out Jack's Creek impoundment.

Limit 20 on Friday/ 30 on Saturday.

Travel Time: 90 minutes

Facilities: None

Access conditions: Walking all day on island and to and from boat Trips

### Trips 2 (Fri 7:15am) & 18 (Sat 7:15am): Huntington Beach State Park.

**(\$5 per person entrance fee to the park.)** This Trip will cover the jetty at the Huntington Beach State Park, together with the nearby tidal creeks and flats, plus the causeway, Mullet Pond, the education center, salt marsh boardwalk and Sandpiper Pond. The jetty is one of best places in the state to find rarities. The main drawback to visiting the jetty is that it is nearly a 3 mile walk round Trip along the beach from the north parking lot. Bring water and lunch. Some food is available in the park store.

Limit: 16

Travel Time: 15 minutes

Facilities: Yes

Access conditions: Walking all day

### Trips 3 (Fri 6:45am) & 19 (Sat 6:45am): Santee Coastal Reserve Extended.

This is a new tour of the Santee Coastal Reserve. It will encompass some areas not normally explored. We will cover acres of former rice fields, river frontage along the South Santee River, magnificent Cypress-Tupelo swamp, upland fields and mixed forest. Expect lots of waterfowl and wading birds, hawks, American White Pelicans, Wood Storks, probable rails, sparrows, raptors, Red-cockaded Woodpeckers, Barn Owls if we are lucky, plenty of Bald Eagles with chances for Golden Eagle.

Limit: 16

Travel Time: 90 minutes

Facilities: None

Access conditions: Moderate walking all day, buggy

### Trips 4 (Fri 6:30am) & 20 (Sat 6:30am): Santee Coastal Reserve and Santee Delta.

Our tour of the Santee Coastal Reserve's and Santee delta will cover the mainland area including rice fields, river frontage along the South Santee River, magnificent Cypress-Tupelo swamp, upland fields and mixed forest. Expect some waterfowl and wading birds, hawks, American White Pelicans, Wood Storks, probable rails, sparrows, raptors, Red-cockaded Woodpeckers and migrating warblers. We may even find some Owls if we are lucky, plenty of Bald Eagles with chances for Golden Eagle.

Limit: 16

Travel Time: 90 minutes

Facilities: None

Access conditions: Moderate walking all day, buggy

## Litchfield Beach Meeting Field Trip Descriptions All Day—Friday & Saturday, Sept. 29 & 30, 2017

### Trips 5 (Fri 8:00am) & 21 (Sat 8:00am): Tom Yawkey Wildlife Center.

This area is a SC Heritage Preserve and administered by the Department of Natural Resources. Public access can be rather limited, so we are excited to offer two full day Trips to this fantastic birding area just 20 minutes from Georgetown. Target birds include American Avocet, American White Pelican, Barn Owl, early waterfowl, shorebirds, rails, raptors, Red-cockaded Woodpeckers, warblers, sparrows and more! Observation towers provide a panoramic view of the south Santee River Delta and surrounding area. This Trip seems to be the one to get it all, in one long day! Bring food and water.

Limit: 13

Travel Time: 60 minutes

Facilities: Yes

Access conditions: ferry over to island

## Litchfield Beach Meeting Field Trip Description All Day—Friday, Sept. 29, 2017

### Trip 6 (Fri 6:30am): Waties Island.

Waties Island is one of the last undeveloped barrier islands on the S.C. coast. A true oasis in comparison to the Grand Strand. Saved for generations by one family, Waties is now preserved by a conservation easement and is host to research projects by the faculty and students of Coastal Carolina University. Bring food and water.

Limit: 20

Travel Time: 60 minutes will bus from hotel

Facilities: None

[Trip Descriptions Continued P. 4](#)

**Friday Evening:** An Optical evening and reception. Representatives from two optics dealers will be present to demonstrate binoculars and scopes. They will also do short presentations on choosing the right optics and how to digi-scope, etc. This will be followed by two drawings for binoculars. One will be open to young birders only and the second to new members attending their first meeting. Members are invited to bring any optics that they wish to sell or trade with other members.

**Saturday Evening Banquet:** Dr. Sidney A. Gauthreaux (See P. 10) will be our keynote speaker. Dr. Gauthreaux has been a birder since age 10. He earned his undergraduate degree at the University of New Orleans, and his Ph.D. at Louisiana State University. He is retired from Clemson and has been a long term visiting professor at the university of Illinois. His work with radar for tracking bird migration was groundbreaking. Dr. Gauthreaux is still an active birder and is a former president of the Carolina Bird Club.

**Our Field Trips** will be both familiar and new. Of course, we will have multiple Trips to Huntington Beach State Park, Myrtle Beach State Park, Santee Coastal Wildlife Management Area, Santee Delta WMA, and Bulls Island. We will again offer two Trips to the Tom Yawkey Wildlife Center. Our new Trips include Waties Island on Friday only. Waties is the northern most barrier island in S.C. It is one of the most untouched places in the state. We will also have a kayak Trip to Sandy Island. This island is both historic and offers some excellent birding. Other new Trips will be to Dirleton Plantation and Waccamaw WMA and to Lake Busbee.

We will also have a shorebird workshop and field Trip, two New Birder field Trips lead by very experienced birders and a field Trip led by two of our young birders.

## **Litchfield Beach Meeting Field Trip Descriptions**

### **Half-Day — Friday & Saturday, Sept. 29 & 30, 2017**

#### **Trips 7(Fri 7:00am) & 22 (Sat 7:15am): Lake Busbee and Conway Treatment Plant.**

This Trip offers diverse habitat so we can expect some early waterfowl, migrants, rails, herons, egrets and birds of prey.

Limit: 16

Travel time: 30 minutes

Facilities: Yes

#### **Trip 8 (Fri 7:15am): Samworth WMA and Dirleton Plantation.**

This 1500 acre tract is primarily freshwater marsh and impoundments with some longleaf pines and open fields. We will look for rails including King, Clapper and Sora, Woodpeckers, Brown-headed Nuthatches, sparrows, and migrating warblers.

Limit: 16

Travel Time: 45 minutes

Facilities: Limited

Access conditions: Moderate walking

#### **Trips 9 (Fri 7:45am) & 15 (Fri 1:25pm): New Birder Workshop**

**( \$5 per person state park fee).** This is for those new to birding or those who just want a refresher. You will visit Huntington Beach State Park looking and listening for birds in a variety of habitats and observing behavior with a focus on identification techniques. This Trip will be led by one of the premier birders in the Carolinas.

Limit: 16

Travel Time: 15 minutes

Facilities: Yes

Access conditions: Moderate walking

#### **Trips 14 (Fri 1:20pm) & 30 (Sat 1:15pm): Huntington Beach State Park Trails.**

**(\$5 per person entrance fee).** Even if you don't go out to the jetty, a Trip to "HBSP" can yield great birding and photographic opportunities. This Trip will cover the causeway, Mullet Pond, the Education Center feeders, salt marsh boardwalk and an overlook on the marshy end of Sandpiper Pond (good for rails and bitterns). This Trip will also visit the beach briefly, but will not make the trek to the jetty. Shorebirds, rails, wading birds, hawks, migrating warblers, owls and falcons.

Limit: 16

Travel Time: 15 minutes

Facilities: Yes

Access conditions: Moderate walking

#### **Trips 10 (Fri 7:00am), 16 (Fri 1:00pm) & 24 (Sat 7:00am): South Tibwin Plantation.**

In the Francis Marion National Forest, the parking lot is right off of US 17. We'll walk through mature pine forest to medium-sized impoundments that will remind you of the wooded portions of Donnelly WMA. These impoundments are where we hope to find a variety of waterfowl, shore birds, rails, bitterns, etc. Warblers, flycatchers, wrens, and birds of prey are also possible.

Limit: 16 (Please carpool)

Travel Time: 60 minutes

Facilities: None

Access conditions: 3 miles of walking

## **Litchfield Beach Meeting Field Trip Descriptions**

### **Half-Day — Friday & Saturday, Sept. 29 & 30, 2017**

#### **Trips 11 (Fri 7:15am) & 25 (Sat 7:30am): Myrtle Beach State Park.**

**(\$5 per person entrance fee.)** We begin at the pier scanning for grebes, gulls terns, and migrating shorebirds, etc. The pier also has restrooms, coffee, snacks etc. Then we will bird the maritime forest and ponds which may yield migrating warblers plus Blue-headed Vireo, Yellow-throated Warbler, Black-and-White Warbler and other passerines. The pond may have wading birds and early ducks. We will look for bittern, rails and sparrows.

Limit: 16

Travel Time: 20 minutes

Facilities: Yes

Access conditions: Moderate walking

#### **Trip 12 (Fri 1:30pm): Shorebird Workshop.**

**The classroom workshop** will focus on key characteristics which help birders on all levels quickly and confidently identify a species. We will cover all families of shorebirds, but our primary focus will be Charadriidae (plovers) and Scolopacidae (sandpipers). Modes of identification with which we will practice include size/shape, behaviors, and habitat.

**In the field at Huntington Beach State Park:** This park can offer ideal foraging habitats for many resident and migratory shorebird species. It provides a great opportunity to focus on silhouette and foraging behavior identification. Some of the target species will be American Avocet, Black-bellied Plover, Yellowlegs, Marbled Godwit, Western Sandpiper and the Least Sandpiper. Willet, Dunlin, Wilson's Snipe, Sanderling, Dowitcher and Whimbrel are all other species we may encounter.

Limit: 16 for field Trip

Travel Time: 30 minutes

Facilities: Yes

Access conditions: This Trip will involve moderate walking on sandy terrains.

#### **Trips 13 (Fri 1:10pm) & 28 (Sat 1:15pm): Huntington Beach State Park Jetty.**

**(\$5 per person entrance fee.)** These afternoon trips will be to the jetty and the nearby tidal creeks and flats. The jetty is one of best places in the state to find migrating shorebirds. It is nearly a 3-mile round trip walk to the jetty.

Limit: 16

Travel Time: 15 minutes

Facilities: Yes

Access conditions: 3 miles of walking on beach.

#### **Trip 23 For Young Birders (Sat 8:00am): Huntington Beach State Park.**

This trip to HBSP will be led by one or two of our young birders. While the leaders will be young the participants can be of any age.

Limit: 16

Travel Time: 15 minutes

Facilities: Yes

Access conditions: Moderate walking

**Trip Descriptions Continued P. 6**

## **Litchfield Beach Meeting Field Trip Descriptions Half-Day — Friday & Saturday, Sept. 29 & 30, 2017**

### **Trip 26 (Sat 7:45am): Sandy Island.**

**(Discounted fee of \$45 per person)** This is a Kayak trip to Sandy Island hosted by Black River Outdoors. Sandy Island is an unincorporated community located between the Pee Dee and Waccamaw Rivers. The community was founded by a freed slave and is still inhabited by some of his descendants. It is the largest undeveloped freshwater island on the east coast and hosts a variety of species the highlight being the Red-cockaded Woodpecker.

Limit: 16

Travel Time: 30 minutes

Facilities: ?

Access conditions: Paddling, and moderate walking

### **Trip 27 (Sat 1:30pm): Pawleys Island South End.**

This trip offers ocean front, inlet and marsh birding. It is a good birding spot especially for those who do not want to make the long trek to the Jetty at HBSP.

Limit: 16

Travel Time: 15 minutes

Facilities: None

Access conditions: Walking on beach

### **Trips 29 (Sat 1:00pm): South Litchfield Beach.**

Located near our hotel, this beach is south of HBSP. Along the causeway leading to the beach is one of the best places to find rails. From the parking lot there is a 1.3 mile walk along the beach where we may see a variety of shorebirds. On the western side of the island we may find plovers, skimmers, and sandpipers.

Limit: 16

Travel Time: 15 minutes

Facilities: None

Access conditions: Walking on beach

**For Sunday Morning Hot Spots, visit - [www.carolinabirdclub.org](http://www.carolinabirdclub.org)**

**Some trips and plans may change depending on conditions and bird patterns.**

**Carolina Bird Club Meeting— September 29-30**

**Litchfield Beach and Golf Resort**

14276 Ocean Highway, Pawleys Island, SC 29585.

Telephone: (843)237-3000 or [www.litchfieldbeach.com](http://www.litchfieldbeach.com).

Discounted group rate for 1 bedroom Summerhouse Suites per night is \$93.22 all-inclusive.

**Reservations to guarantee a room at this rate by July 28.**



# CBC Costa Rica 2017 Bonus Trip

## By Sherry Lane



Last February the Carolina Bird Club sponsored a bonus trip to Costa Rica. We had a group of 10 CBC birders including myself, plus our excellent local guide, Steven Easley and our friendly bus driver with us throughout the trip.

The group met up in San Jose and loaded up into a new comfortable (everyone has a window seat) Toyota Coaster and set off on our journey. We had 8 full days of birding. We began in the lush middle elevations of the Caribbean slope before descending to the diverse Caribbean lowlands including La Selva OTS.

After the lowlands, we ascended to the middle elevations of the Caribbean slope including the beautiful Tapanti National Park. Our final destination brought us to the Pacific Highlands of the Savegre, home of the stunning Resplendent Quetzal!

Our total bird species count was 350 for the trip! There were so many beautiful birds it is hard to decide which pictures to include, but here are a few of the highlights.

Overall it was an excellent birding adventure. We had the very best local guide who was fun and interesting. All the accommodations were great! The lodges we stayed at were exceptionally nice, clean and comfortable. The food was plentiful and delicious! The local people "Ticos" are so friendly! Costa Rica in my opinion is a birders paradise!

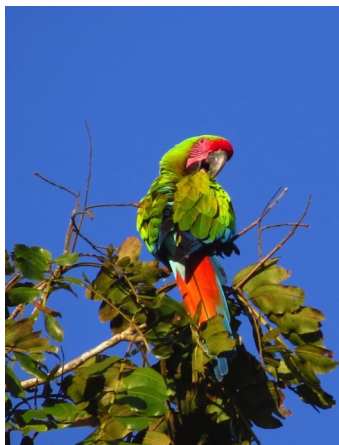
If you are interested in joining in on a CBC bonus trip to Costa Rica stay tuned to the CBC newsletter because we are hoping to run two different trips in February of 2018. This will allow for more participants to go with a maximum of 9 participants per trip.

Pura Vida!





**Long-tailed Silky Flycatcher.**  
Photo by Steve McInnis at Miriam's Restaurant, near Savegre Mountain Lodge. Silky-flycatchers are more closely related to the thrushes and waxwings than to tyrant flycatchers. We also had good looks at its relative the Black-and-yellow Silky-flycatcher.



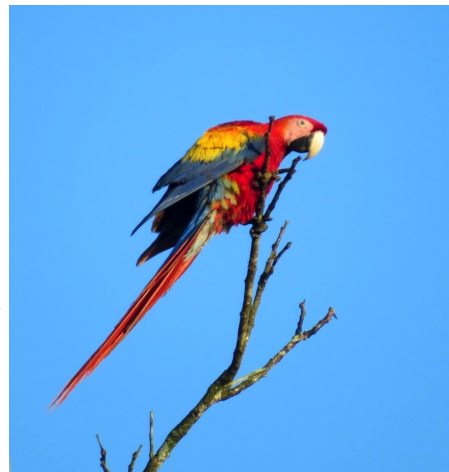
**Great Green Macaw.**  
Photo by Audrey Whitlock near La Selva OTS. Unfortunately, these amazing creatures are endangered despite efforts to protect them.

**Sunbittern.**  
Photo by Steve McInnis at Rio Perlas . This bird is amazing when it opens its wings.



Below is a picture I was given from our guide, Steven Easley, that his father took.

**Scarlet Macaw.**  
Photo by Sherry Lane in the El Tigre area. These incredible birds were endangered but Costa Rica has worked hard to protect them and subsequently they are having a good come back.



**Sulphur-winged Parakeet.**  
Photo by Audrey Whitlock at Savegre Mountain Lodge. We had 11 different species of parrots!



**Emerald Toucanet.**  
Photo by Audrey Whitlock taken at Cinchona . Everyone loves a Toucan! We also saw lots of Col-lared Aracaris, Yellow-throated and Keel-billed Toucans.

**Volcano Hummingbird.**  
Photo by Steven Easley at Savegre Valley. The hummingbirds are amazing in Costa Rica we saw 26 different species!

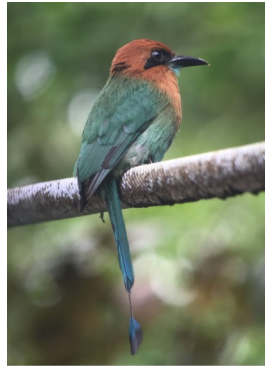






**Magnificent Hummingbird.**  
Photo by Sherry Lane at Poasito.

**Broad-billed Motmot.**  
Photo by Sherry Lane at La Selva OTS.



**Buffy-crowned Wood-partridge.**  
Photo by Sherry Lane at Savegre Mountain Lodge.  
This is another uncommon and usually difficult to see bird that was actually following us along in the trail in Savegre.

**Spotted Wood-Quail.**  
Photo by Sherry Lane at Savegre Mountain Lodge.  
This bird was not happy to have the above Buffy-crowned Wood-partridge in his territory and was desperately trying to chase it off.



**Passerini's Tanager.**  
Photo by Sherry Lane at La Quinta.



**Volcano Junco is a high elevation paramo endemic species to Costa Rica and Panama. He is the big daddy of juncos!**  
Photo by Sherry Lane in the Paramo of Cerritos de la Muerte.

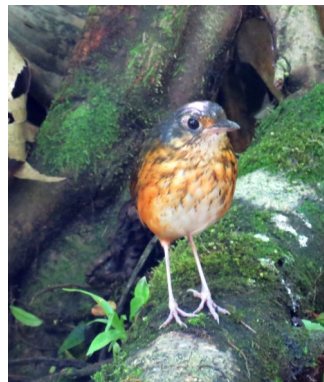
**Resplendent Quetzal!**  
Photo by Sherry Lane.  
This stunningly beautiful bird loves to eat avocados. If you know where to find the avocado trees you can find them feeding there in the highlands of Savegre.



**Gartered Trogon.**  
Photo by Sherry Lane at La Selva.

**Thicket Antpitta.**  
Photo by Sherry Lane near Limon Pococi .

This is a very elusive species. We were taken to a special place in the forest by a local birder who has this one trained to come out of hiding and eat worms. We had quite the show!



**Silvery-throated Jay.**  
Photo by Steven Easley.  
This was my favorite bird of the trip. It is a very rare species endemic to Costa Rica and Western Panama. They are found in the highlands and are very difficult to find foraging high up in the canopy. We had to take 4x4 jeeps halfway up the mountain and hike the rest of the way up. We were rewarded with good looks and even pictures of this amazing bird!

We also saw 11 mammal species including Three-toed and Two-toed sloths.

# Welcome New Members!

## Members Upgraded to Life Membership

Chandra Biggerstaff  
Greenville, NC

Margaret Small  
Asheville, NC

Don Seriff & Kimberly Grant  
Greenville, NC

Chrstine Stoughton-Root  
Merritt, NC

Mac Williams  
Hartsville, SC

## New Members

Peggy Baker  
Charlotte, NC

Amy Boggan  
Hayesville, NC

Vincent Connors  
Isaure de Buron-Connors  
Spartanburg, SC

Carolyn Craig  
Davidson, NC

Steven & Mary Dingeldein  
Burlington, NC

Robert Driver  
Greenville, NC

Duncan Ellison  
Columbia, SC

Sarah Hierholzer  
Michael Kacmarcik  
Simpsonville, SC

Linda Holman  
Wilmington, NC

Patricia McClurkin  
Hendersonville, NC

Jelmer Poelstra  
Chapel Hill, NC

Crystal Reynolds  
Charleston, SC

Tom Schatzman  
Charleston, SC

Roger Shaw  
Raleigh, NC

Debbie & Jimmy Shetterly  
Todd, NC

Margaret Small  
Asheville, NC

Anne Tyson  
Lakeland, FL

Blaine Wise  
Charleston, SC



Dr. Sidney A. Gauthreaux received his B.S. from LSU at New Orleans (now the University of New Orleans) in June 1963; M.S. Louisiana State University, Baton Rouge, in August 1965; Ph.D. Louisiana State University, Baton Rouge, in August 1968; and held a Post-Doctorate Fellowship at the Institute of Ecology, University of Georgia from fall 1968 until fall 1970. He retired from Clemson University where he was a faculty member from 1970-2006 and taught ornithology, animal behavior, and behavioral ecology in the Department of Biological Sciences. He currently consults in the area of Remote Sensing and Technology and is a part-time faculty member in the Department of Civil and Environmental Engineering at the University of Illinois in Urbana-Champaign where he works with a group assessing avian radars that can be used to prevent bird/aircraft collisions.

Dr. Gauthreaux's research emphasis on studies of bird migration across the Gulf of Mexico began in graduate school in the early 1960s and continues today. He has used combinations of radar and direct visual techniques to study the characteristics and geographical patterns of bird migration throughout the United States. His research in applied ornithology has examined 1) the attraction of migrating birds at night to different types of lighting on tall towers, 2) the risks of migrating birds colliding with man-made structures such as transmission lines, towers, and wind turbines, and 3) the problem of aircraft colliding with migrating birds.

**Online registration opens on August 12 @ 2:00pm and closes September 23 at 8:00am.**  
[www.carolinabirdclub.org](http://www.carolinabirdclub.org)

**CBC Litchfield Beach, SC Registration Form**

Name(s) \_\_\_\_\_  
 Address \_\_\_\_\_ City \_\_\_\_\_ State \_\_\_\_\_ Zip \_\_\_\_\_  
 Day Phone (\_\_\_\_) \_\_\_\_ - \_\_\_\_\_ Evening Phone (\_\_\_\_) \_\_\_\_ - \_\_\_\_\_

Meeting Registration (Member) \_\_\_\_ x \$30 = \$ \_\_\_\_\_

Meeting Registration (Non-Member) \_\_\_\_ x \$35 = \$ \_\_\_\_\_

Buffet Dinner \_\_\_\_\_ x \$30 = \$ \_\_\_\_\_

Field Trip Sign-up	A.M. 1 <sup>st</sup> /2 <sup>nd</sup> Choice	P.M. 1 <sup>st</sup> /2 <sup>nd</sup> Choice	All-day 1 <sup>st</sup> /2 <sup>nd</sup> Choice
Friday	/	/	/
Saturday	/	/	/

To pre-register for field trips, place the trip number(s) in the boxes to the right. Meeting registration at the door costs \$40.

**Total Enclosed =** \$ \_\_\_\_\_

Club policy requires all field trip participants to comply with the field trip leader’s assessment and requests concerning the physical ability of each participant to make or complete the trip.

I will release and discharge (and will not make a claim against) the Carolina Bird Club for injury, death, or property damage arising from my participation at this meeting and/or Club field trips. This release of liability is entered into on behalf of all members of my family, including all minors accompanying me. I certify that I am the parent or legal guardian of any such minors and that I am over 18 years of age.

Signature \_\_\_\_\_ Date \_\_\_\_\_ Signature \_\_\_\_\_ Date \_\_\_\_\_

**Make check payable to Carolina Bird Club**  
**and send to: CBC, 9 Quincy Place, Pinehurst, NC 28374**

**Before sending in this form, check the website at [www.carolinabirdclub.org](http://www.carolinabirdclub.org) to see if any of your trips are full, rescheduled or cancelled.**

Processing of mail-in registrations will not begin until online registration opens. Register online for the best availability of field trips.

Cancellations will be refunded if received by September 16 at 6:00pm. Cancel by contacting the Headquarters Secretary at [hq@carolinabirdclub.org](mailto:hq@carolinabirdclub.org). If you need to cancel after the refund cutoff date, please notify the Headquarters Secretary so we can give your field trip space to someone on the waiting list.

**If you registered for the buffet and elect the vegetarian option, check here: \_\_\_\_\_ # persons \_\_\_\_\_**





Carolina Bird Club  
www.carolinabirdclub.org

**Carolina Bird Club, Inc.**  
**1809 Lakepark Drive**  
**Raleigh, NC 27612**

Periodicals Postage Paid  
at Pinehurst, NC 28374  
and additional mailing offices

## Upcoming CBC Meetings

Fall 2017—Litchfield Beach, South Carolina

Winter 2018—Wrightsville Beach, North Carolina

Spring 2018—Flat Rock, North Carolina

### CBC Board Members

**President**, Christine Stoughton:Root,  
Merritt, NC  
[cssrbdr@gmail.com](mailto:cssrbdr@gmail.com)

**Vice:Presidents**

Teri Bergin, Mt. Pleasant, SC  
Sherry Lane, Wilmington, NC  
Steve Tracy, Gastonia, NC

**Secretary**

Jeri Smart, Rolesville, NC

**Treasurer**

Paul Dayer, Durham, NC

**NC Members:at:Large**

Lester Coble, Ernul, NC  
Karyl Gabriel, High Point, NC  
Katherine Higgins, Wilmington, NC  
Marilyn Westphal, Hendersonville, NC

**SC Members:at:Large**

Lewis Burke, Columbia, SC  
Steve McInnis, Columbia, SC

**Immediate Past President** : Irvin Pitts

**Editor of The Chat**– Steve Shultz

**Website Editor**: Kent Fiala, Hillsborough, NC

**Headquarters Secretary**: Carol Bowman, Pinehurst, NC,  
[hq@carolinabirdclub.org](mailto:hq@carolinabirdclub.org)

**CBC Newsletter Editor**: Vivian Glover, Orangeburg, SC,  
[newsletter@carolinabirdclub.org](mailto:newsletter@carolinabirdclub.org)

**Deadlines for submissions are the 15th of  
December, February, April, June, August, and October.**

**[www.carolinabirdclub.org](http://www.carolinabirdclub.org)—UPDATE**

The **CBC Newsletter** is published bimonthly by Carolina Bird Club, Inc. Founded in 1937 the membership is open to anyone interested in birds, natural history, and conservation. **Current dues are**: Individual & non:profit, \$30; Family, \$35; Student, \$15; Patron, \$50 and up; Sustaining & businesses, \$30; Life, \$500; Associate Life (in household with Life Member), \$100 (both Life memberships can be paid in four annual installments).

**Membership dues** include \$4 for a subscription to **CBC Newsletter** and \$5 for a subscription to *The Chat*. **Cost for CBC bird checklists**, including postage: 10@\$5.45, 25@\$13.40, 50@\$27.00, and 100@\$54.00.

**Join the CBC** at <https://www.carolinabirdclub.org/dues/>. Enter change of address at <https://www.carolinabirdclub.org/members/profile/>. Order checklists from: CBC Headquarters Secretary, 9 Quincy Place, Pinehurst, NC 28374. Copyright © 2017.

*Printed on 100% recycled paper at Carolina Printing.*